



The Widener Building, Suite 1500, One South Penn Square, Philadelphia, PA 19107-3502
T +1 215 636 9999 F +1 215 636 9989 www.rmjmhillier.com

Ms. Sandra Stokes
Executive Vice Chair
Foundation for Historical Louisiana
P. O. Box 908
Baton Rouge, LA 70821

RE: Response to email Comments from Mark Moses
Charity Hospital Feasibility Study
New Orleans, LA

November 18, 2008

Dear Sandra:

As requested by the Foundation for Historical Louisiana, below are the responses to questions from Mark A. Moses, P.E., Senior Manager, State of Louisiana, Facility Planning and Control from an email dated November 13, 2008:

COMMENT 1

"... Page 60 of the report references an existing deficiency concerning the required clearance between corridor columns (printed below for your convenience).

"The finished clear width between corridor columns at the upper floors is less than the required 96 inch clearance"

Could you please provide the existing dimensions between the corridor columns according to your consultants? ."

Response

The clear width between the existing steel columns along the corridor is 100 1/4 inches (8'-4 1/4"). See attached drawing A: A1 shows existing corridor width and A2 shows proposed corridor construction providing 96 inches (8'-0") clear.

COMMENT 2

"Also, on page 93 a typical patient room is shown. Could you please provide the dimensions of this standard room layout so that we can better understand the proposed size?"

Response

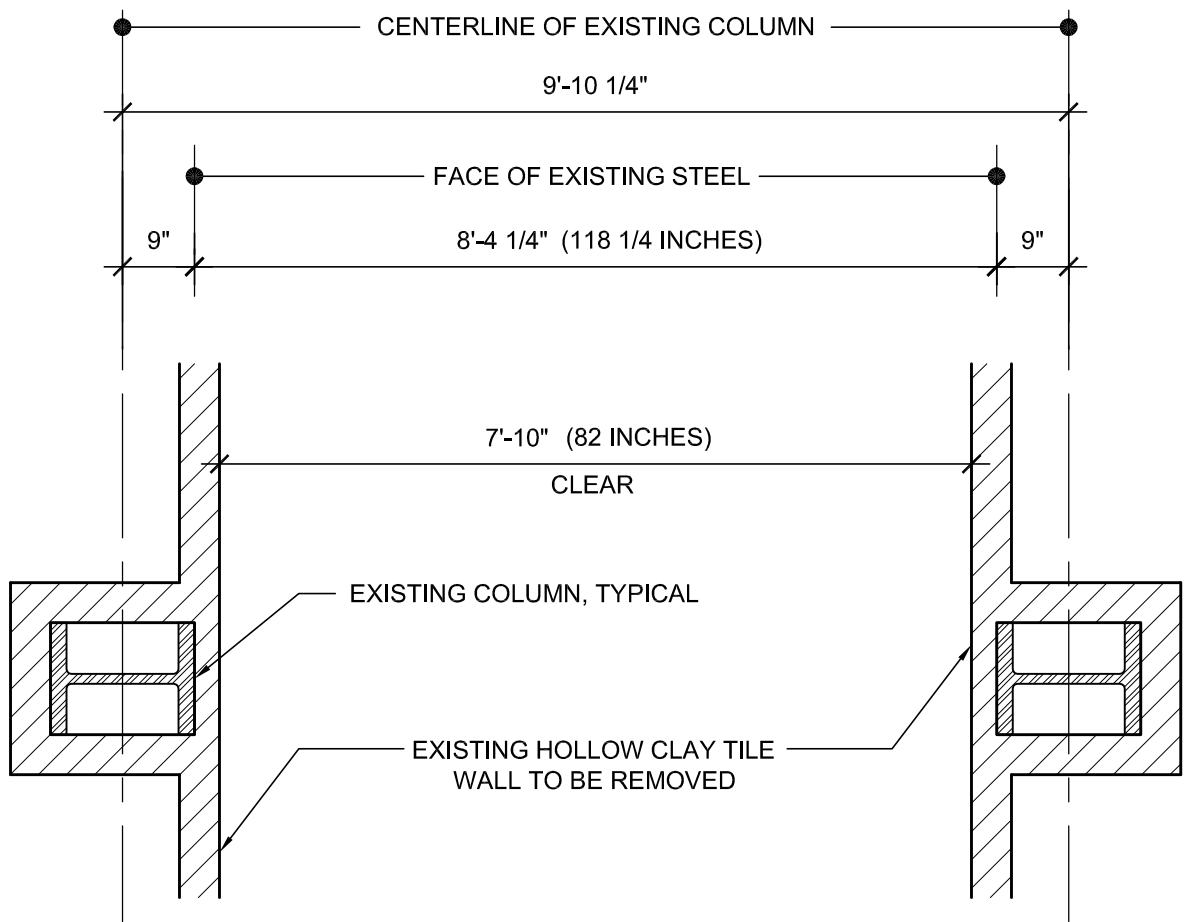
See attached drawing B showing patient room dimensions. It is 215 square feet (256 square feet including the toilet room).

Please do not hesitate to contact me should you have any questions or require additional information.

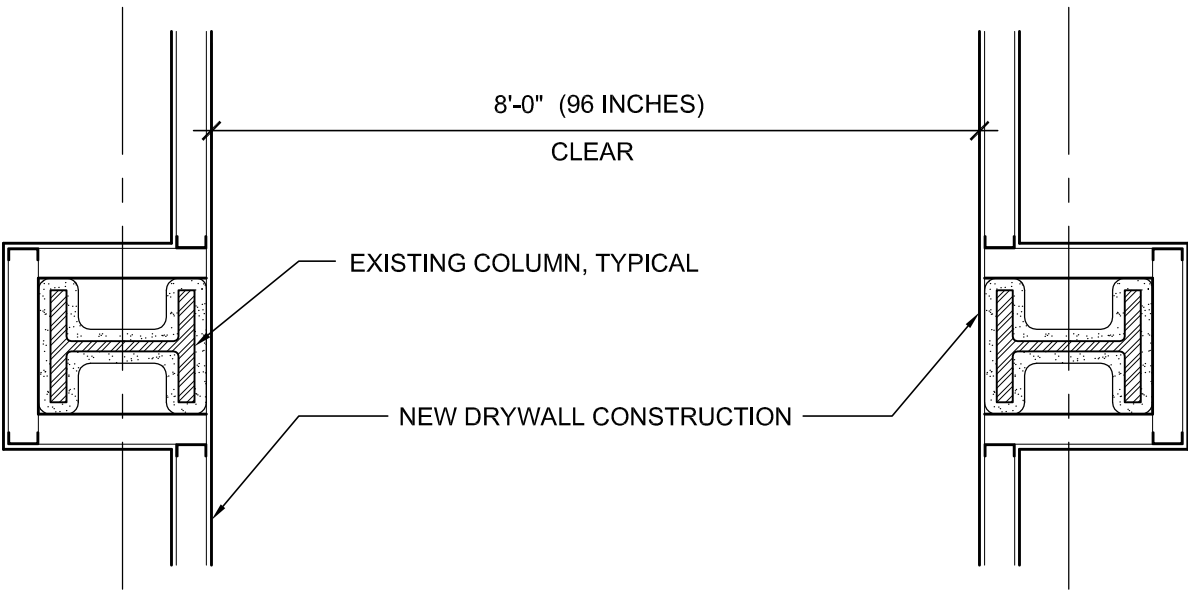
Sincerely yours,

A handwritten signature in black ink, appearing to read 'R. Stephen McDaniel'.


R. Stephen McDaniel, AIA
Managing Principal

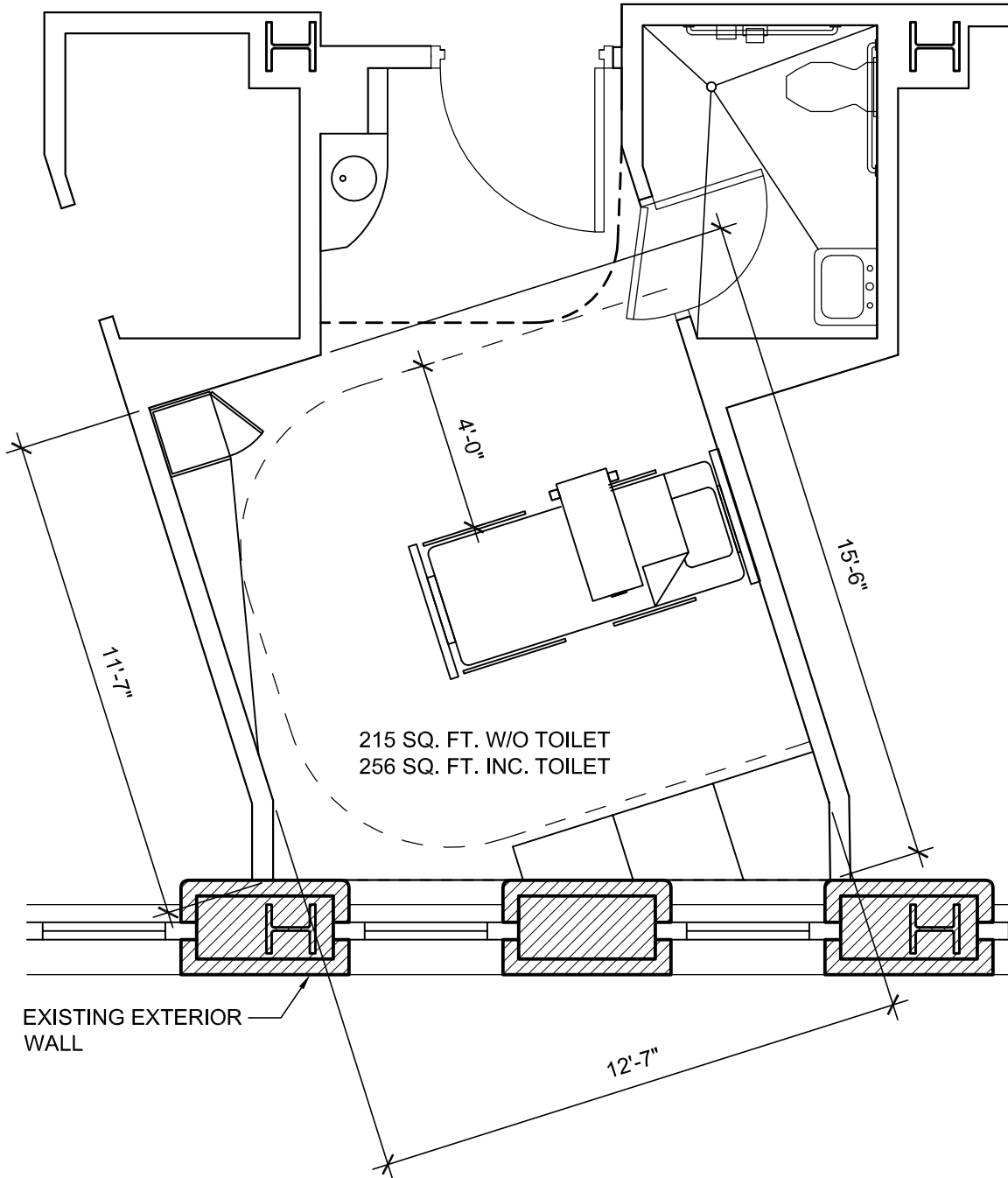


1
A EXISTING CORRIDOR




2
A PROPOSED NEW CORRIDOR

 <p>The Widener Building Suite 1500 One South Penn Square Philadelphia, PA 19107-3502</p> <p>Phone: (215) 636-9999 Fax: (215) 636-9989</p>	Project Title	Version	Date
	MEDICAL CENTER OF NEW ORLEANS CHARITY HOSPITAL FEASIBILITY STUDY	Scale 1/2" = 1'-0"	Project No.
	Sheet Title	Sheet No.	
EXISTING & PROPOSED CORRIDOR WIDTHS	A		



1
B TYPICAL MEDICAL/SURGICAL INPATIENT ROOM

 <p>The Widener Building Suite 1500 One South Penn Square Philadelphia, PA 19107-3502</p> <p>Phone: (215) 636-9999 Fax: (215) 636-9989</p>	Project Title	Version	Date
	MEDICAL CENTER OF NEW ORLEANS CHARITY HOSPITAL FEASIBILITY STUDY	Scale 1/4" = 1'-0"	Project No.
	Sheet Title	Sheet No.	
	TYP. MEDICAL/SURGICAL INPATIENT ROOM DIMENSIONS	B	